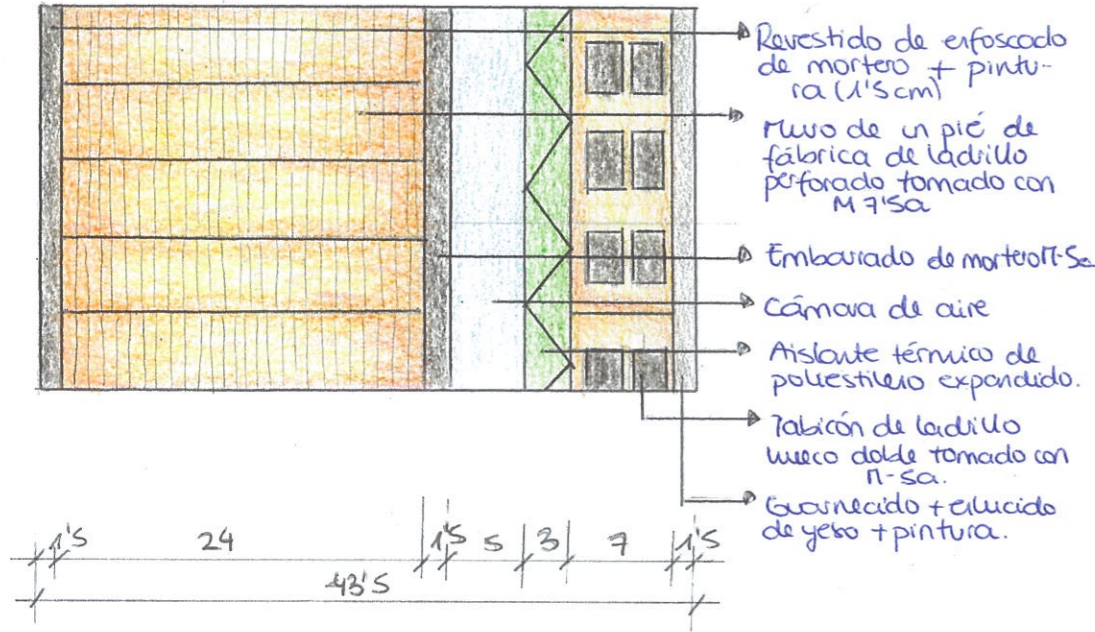
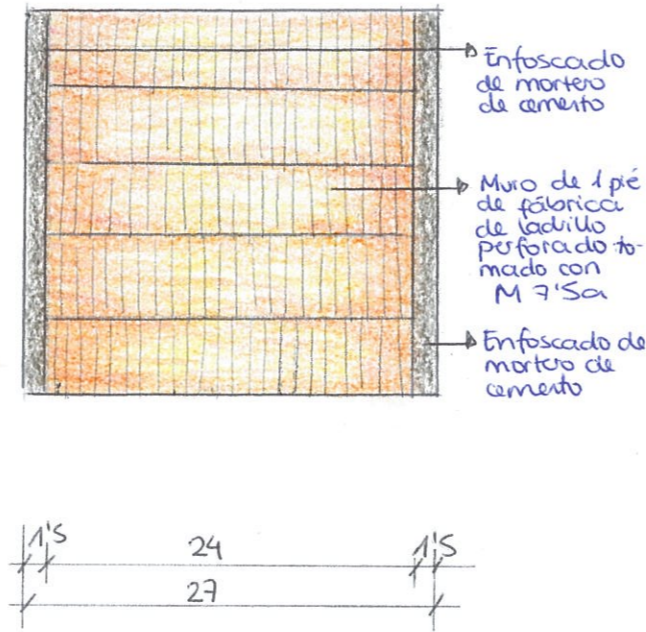


TIPOLOGÍA

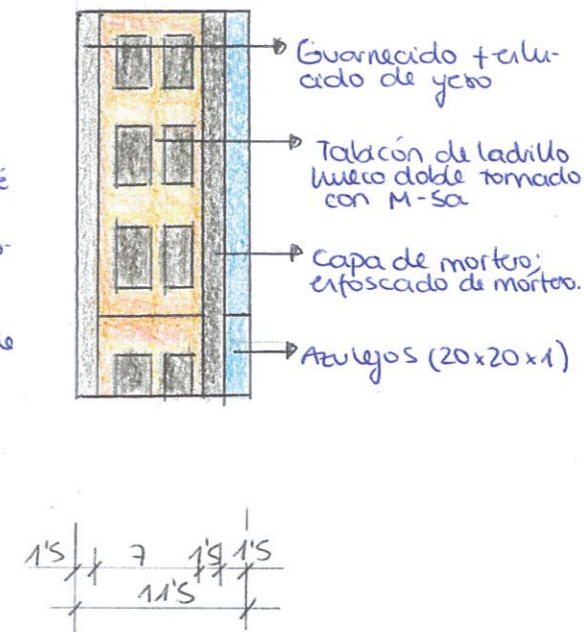
MURO PORTANTE Y ENVOLVENTE



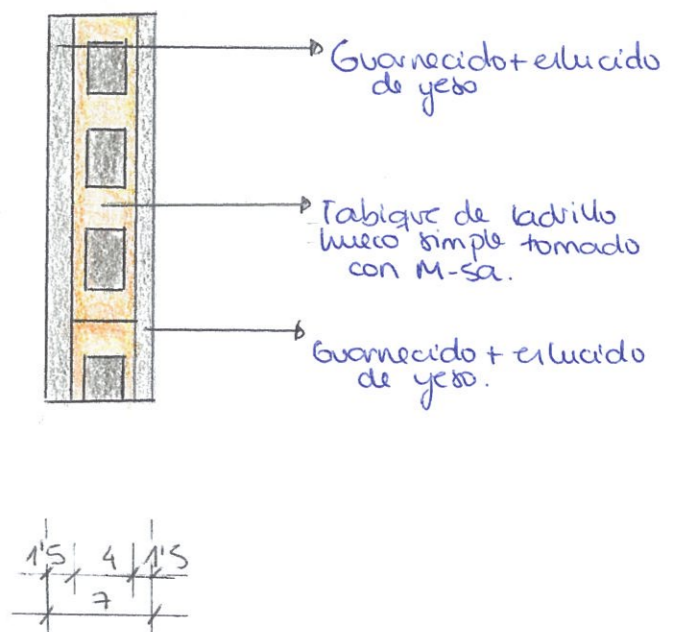
MURO PORTANTE EXTERIOR



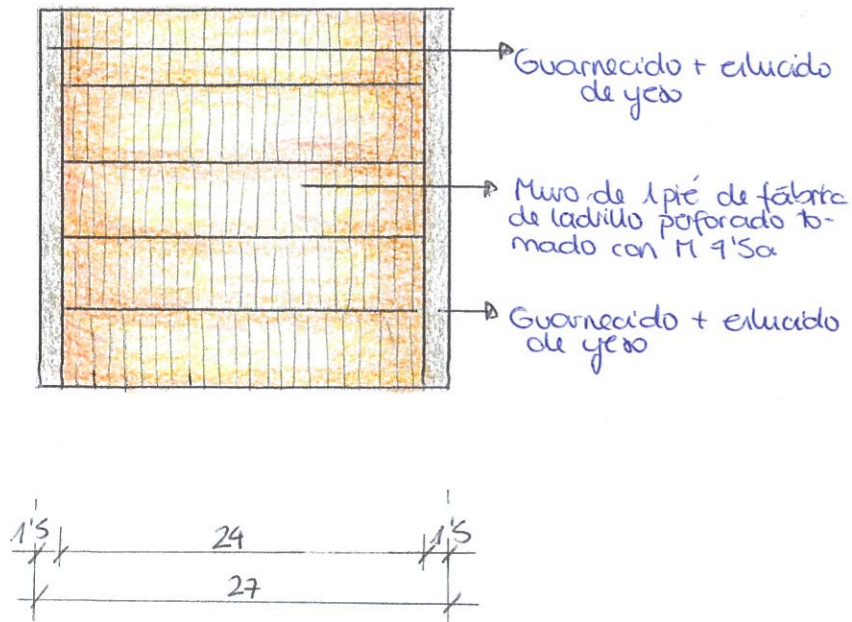
TABICÓN



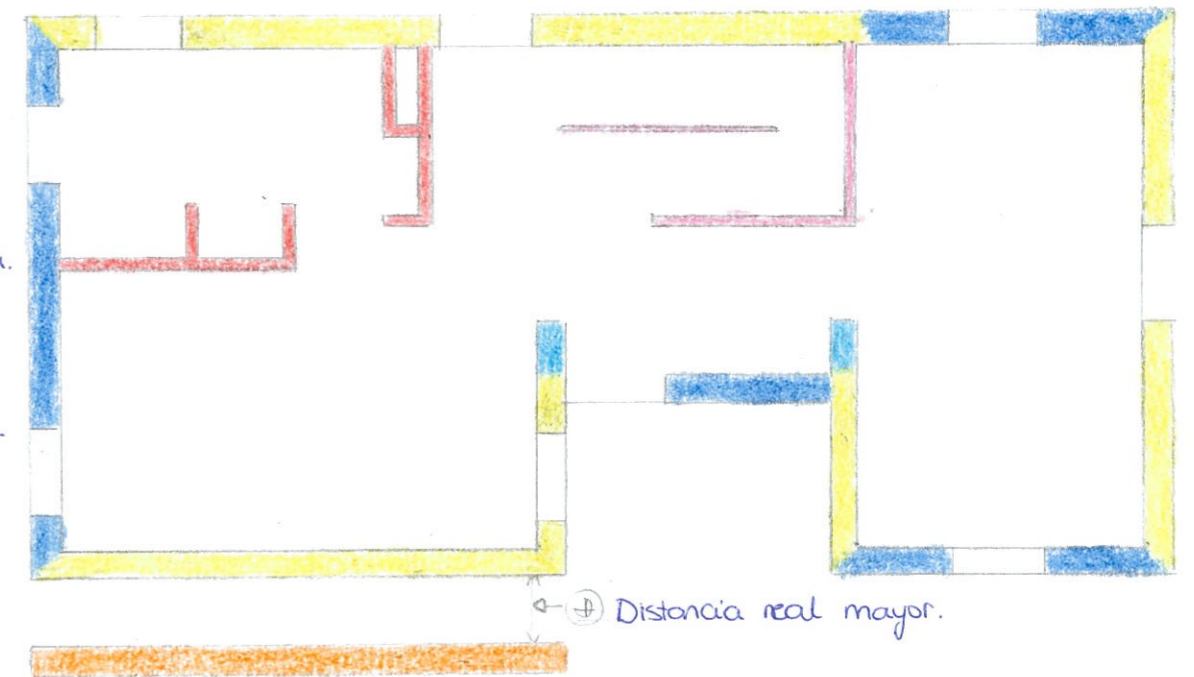
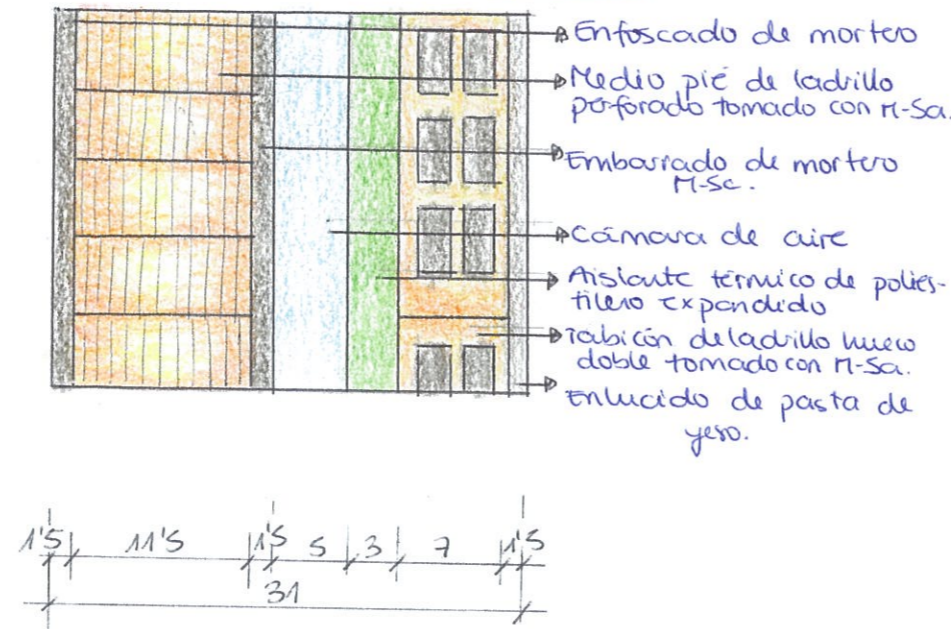
TABIQUE



MURO PORTANTE INTERIOR



CERRAMIENTO ENVOLVENTE NO PORTANTE



ESCALA 1:500

Medidas tomadas en cm

GLORIA ENRIQUETA CABEZA	Nº 6
"TIPOLOGÍA" PLANTA BAJA	6:105

MB*